

# Orchid Society of California

**Next Meeting: Monday, November 20 2006  
Lakeside Garden Center, Lake Merritt  
666 Bellevue Ave. Oakland, California**

**PROGRAM TOPIC: Coelogynes**

## Cynthia Hill

Cynthia grew up in St. Louis , earned at Bachelor's degree in Biology at Lawrence University in Appleton , Wisconsin , and worked in technical sales and marketing in the biotechnology field. She has been an enthusiastic orchid hobbyist for over 30 years, focusing on species. Favorite genera in her collection are Dendrobium, Holcoglossum, Coelogyne, and Paphiopedilum; she has a special fondness for strange miniatures, especially those, like Trichoceros, that mimic insects. Her plants have received the highest awards from the AOS for both flower quality and cultural excellence, and her specimen of Dendrobium hercoglossum received the 2000 Benjamin Kodama Award for most outstanding example of the Dendrobium Alliance. Her plant of Cochlioda vulcanica 'Ganesh' was recently named Reserve Grand Champion at the New York International Orchid Show.

Cynthia has traveled on exploring trips to the islands of Indonesia and the Philippines , to Thailand , China , Japan , Australia , Antarctica, Peru , and to Sabah and Sarawak on the island of Borneo , where she observed orchids and Nepenthes in situ. She is a member of the San Francisco Orchid Society, has served on the conservation committee of the AOS and San Diego County Orchid Society, is an accredited AOS probationary judge, and is Acting Editor of Orchid Digest magazine.

Contact: clhill@adelphia.net

**CULTURE SESSION: Coelogynes**

## Cynthia Hill

Cynthia Hill will lead a culture session on Coelogynes.

November 2006

---

### Inside this issue:

Calendar	2
Vanda Culture	3
Bay Area AOS Awards	4
Contact Us	4
Announcements	5

### Meeting Details

Plant sales will open at 6:30 PM.

Pre-program culture session starts at 7:00 PM

Meeting starts at 7:30 PM.

- Raffle table will be provided by OSC
-

## Dinner with the Speaker

The Speaker's Dinner will be at the Ta Ke Sushi Bar, 357 Grand Avenue, just south of the park. The restaurant serves a variety of cooked Japanese dishes as well as sushi and sashimi.

## Raffle Table Volunteers

November— George McRae

## Calendar

### December 2nd, 2006

#### **Paph House Annual Open House & Sale**

8:00 AM- 5:00 pm

375 Warwick Ave, San Leandro

Paphiopedilums, Miltoniopsis, Cattleyas, Cymbidiums and other varieties for sale. For directions or with questions contact

Fred Jurnigen or Francisco Baptista (510) 635-2845  
Paph@flash.net

### December 30th, 2006

Meet the Breeders! Orchid Educational Event 10AM-4PM

The Women's Club 3320 Monroe St. Carlsbad, CA  
Featuring Terry Root of the Orchid Zone,

## Dessert Assignments

Members with last names from Gates to Lutz are responsible for bringing refreshments to the November meeting. If it is your turn to bring refreshments, you are also responsible for participating in the set-up and clean-up. If you are unable to bring refreshments, please make a monetary donation. Those that provide refreshments are entitled to participate in a drawing for the first choice of raffle plants.

Frank Smith, Krull-Smith Orchids,

Fred Clarke—Sunset Valley Orchids

Loren Batchman—Casa des Orquideas

Each will give a power point on their plants and the direction of their breeding program. Plants will be available for sale.

### January 6th & 7th, 2007

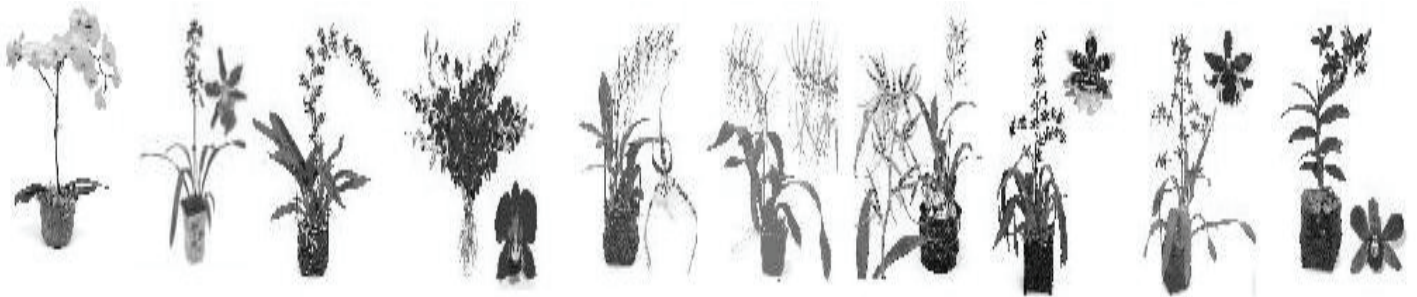
#### **Peninsula Orchid Society Show & Sale**

10am-5pm

Community Activities Building -

1400 Roosevelt Ave, Redwood City, CA

Featuring show exhibit of incredible orchids, orchid vendors, informative seminars, member sales and orchid art.



# Growing Vandas & Ascocendas

## Basic Culture

Aside from their beauty, vandaceous orchids are appealing plants to grow because they require no potting medium. They thrive at warm temperatures, between 60 and 90 degrees Fahrenheit. They benefit from daily watering in the spring, summer, and fall, and watering three-four times a week in the winter months. We have found that most vandas thrive under higher light conditions than you would expect. We provide higher rates of light, water, fertilizer, and hormones for our show quality collection.

High Light - 40% shade cloth w/ high air movement

High Water - 5-7 days a week total soaking of roots

20-20-20 fertilizer 4 x month, bloom booster 1 x month

Rooting and growing hormones with micro-nutrients

Do not disturb the plant roots!

## Advanced Tips

For the grower who has found the right light, the right fertilizer, and waters at least five times a week, it may be useful to explore some advanced growing ideas.

Use KLN by DynaGrow - it is an outstanding rooting hormone that we use every two months. KLN is

pricey, but doubles our root productions and leads to better water and fertilizer uptake. This leads to strong, free flowering plants with the best possible blooms. More roots = Better plants

Use a sugar solution for stress - when plants are heat stressed give them what they try to make already, Glucose! Add about 1 cup of sugar of warm water directly to the roots. Do not pour into medium, with a pair this good fungicide have saved plants this way.



Almost all of the great growers use Superthrive hormone supplement. We have seen plants produce more new growth when applied during a regular growing regimen.



# AOS Awards

Pacific Central Judging Center,  
Oakland, October 16, 2006

hibited by James F. Hile

Ascda. Muang Thong 'White Diamond'  
(Ascda. Tubtim Velvet x V. Nakornsawan  
Belle)  
HCC 78

Ex-



Pacific Central Supplemental Center  
San Francisco, August 1, 2006

## Contact Us

### Officers

Lois Miller *President* 510-828-6605  
slippergal@msn.com  
Paul Chim *Vice President* 510-635-3260  
(no email)  
Sharalyn Stebben *Secretary* 510-582-3404  
sharalyns@aol.com  
Dan Chiappone *Treasurer* 925-943-2022  
Dchiapej@aol.com  
Carol Klonowski *Past President*  
510-538-3092 cklonowski@aol.com

### Directors

Director—*open*  
Fred Shull 510-569-9940  
fashull@pacbell.net  
George McRae 510-233-7374  
elegans@aol.com

### Volunteers

Sharalyn Stebben *Advertising* 510-582-3404  
Lois Miller *Membership Chair* 510-793-4243 slippergal@msn.com  
George McRae *Publicity Chair* 510-233-7374 elegans@aol.com  
Heather Drobis *Hospitality* 510-531-1210  
Dawn Muller *Refreshments* 510-893-7244  
Gerardus Staal *Special Projects* 650-328-2404  
Ray Vickers-Traft *Special Projects* 510-839-9647  
Lila Tschappat *Newsletter Editor* 510-845-7836  
lilananda78@yahoo.com  
Agnes Raddell *Plant Sales* 925-829-0485  
Jane Tsushima *Plant Sales* 510-635-5129  
Mary Lou Smith *Raffle Sales* 510-538-9977 mlrls@aol.com  
Carol Klonowski *Website Goddess* 510-538-3092  
cklonowski@aol.com  
Mary Lou Smith *A.O.S. Representative* 510-538-9977 mlrls@aol.com  
Mimi Rose *Greenhouse Tours* 510-569-8683  
rose4mimi@Yahoo.com  
Chris Martin *Librarian* lagomorph@aamedanet.net

OSC 2006 Trophy Winners

I. TROPHIES FOR EXHIBITS:

<b>1. AOS SHOW TROPHY - most outstanding exhibit in show</b>		
Exhibitor:	<u>Not Awarded (Judges did not find any display that reached over 80 points)</u>	
<b>2. ODC SHOW TROPHY - non-commercial exhibit displaying the highest levels of artistry, taste and innovation in design and presentation; flower quality; cultural excellence</b>		
Exhibitor:	<u>Walter Shinn</u>	Display No. <u>10</u>
<b>3. BEST DISPLAY (Commercial)</b>		
Exhibitor:	<u>Hanging Gardens</u>	Display No. <u>1</u>
<b>4. BEST SMALL-SIZED EXHIBIT (Non-Commercial)</b>		
Exhibitor:	<u>The Stalls</u>	Display No. <u>9</u>
<b>5. BEST MEDIUM-SIZED (Non-Commercial)</b>		
Exhibitor:	<u>Walter Shinn</u>	Display No. <u>10</u>
<b>7. BEST DISPLAY BY A VISITING ORCHID SOCIETY</b>		
Exhibitor:	<u>none</u>	Display No. <u>n/a</u>
<b>8. BEST INTERPRETATION OF SHOW THEME</b>		
Exhibitor:	<u>Orchids and Gardens</u>	Display No. <u>8</u>
<b>9. BEA AND NOBLE EMERY TROPHY - exhibit by one or more novice growers</b>		
Exhibitor:	<u>none</u>	Display No. <u>n/a</u>
<b>10. BEST ORCHID DISPLAY IN A BASKET - not part of a larger Display</b>		
Exhibitor:	<u>none</u>	Display No. <u>n/a</u>

II. TROPHIES FOR INDIVIDUAL PLANTS

<b>1. FOUNDERS TROPHY - best orchid in show, combined culture/flower quality</b>		
<u>Cymbidium elegans,</u>	Exhibitor: <u>Cynthia Hill</u>	<u>Members open tables</u>
<b>2. H.E. METCALF TROPHY - best specimen plant from all classes</b>		
<u>Cymbidium elegans,</u>	Exhibitor: <u>Cynthia Hill</u>	<u>Members open tables</u>
<b>3. BEST ORCHID SPECIES - best species orchid from all classes</b>		
<u>Cymbidium elegans,</u>	Exhibitor: <u>Cynthia Hill</u>	<u>Members open tables</u>
<b>4. WILLIAM B. LANDE CYRUS CUP - best intergeneric hybrid, non-commercial growers only</b>		
<u>Willsonara Intermezzo "Passion",</u>	Exhibitor: <u>Musia Stagg</u>	Display No. <u>12</u>
<b>5. FRANK FORDYCE TROPHY - best miniature Cattleya, under 12" in height, non commercial</b>		
<u>Laelia Amdena "Blue Magic"</u>	Exhibitor: <u>Musia Stagg</u>	Display No. <u>12</u>
<b>6. FRED JERNIGAN AWARD - best Paphiopedilum</b>		
<u>Paphiopedilum wardii,</u>	Exhibitor: <u>Cynthia Hill</u>	<u>Members open tables</u>
<b>7. SEVERIN ORCHID FARM AWARD - best miniature botanical species under 8 inches</b>		
<u>Dendrobium sp. Aff. dichaeoides,</u>	Exhibitor: <u>Hanging Gardens</u>	Display No. <u>1</u>
<b>8. BEST PLANT OR FLOWER GROWN UNDER LIGHTS, IN A WINDOW, OR OUTDOORS</b>		
<u>no entries,</u>	Exhibitor: <u>n/a</u>	Display No. <u>n/a</u>
<b>9. C.E. WILSON JR., AWARD - best first bloom seedling exhibited by the hybridizer</b>		
<u>Vanda Dogtown,</u>	Exhibitor: <u>Musia Stagg</u>	Display No. <u>12</u>

### III. ORCHID ARRANGEMENTS AND PERSONAL ADORNMENT

**WALLY LYNCH TROPHY** - excellence in orchid arrangement, corsages, bridal bouquets, hairpieces, and other personal adornment, etc

no entries, Exhibitor: n/a Display No. n/a

### IV. ARTISTIC EXHIBITS

**BEA EMERY MEMORIAL AWARD** - best Artistic expression in show

Ceramic Painting of Pink Cymbidiums, Exhibitor: Jane Tsushima Display No. Hallway

### V. OTHER

**EDUCATIONAL DISPLAY**

Native Orchids of California Exhibitor: Lois Miller Display No. Hallway

### OSC 2006 Novice Trophy Winners

<b>A.</b>	<b>BEST CATTLEYA ALLIANCE by a Novice Grower</b> <u>C. (lost label)</u> Exhibitor: <u>Brian White</u> Display No. <u>Members Open Tables</u>
<b>B.</b>	<b>BEST CYPRIPEDIUM ALLIANCE by a Novice Grower</b> <u>Paph Transdoll</u> Exhibitor: <u>Ray &amp; Maren Gleason</u> Display No. <u>Members Open Tables</u>
<b>C.</b>	<b>BEST PHALAENOPSIS / VANDA ALLIANCE by a Novice Grower</b> <u>None eligible</u> , Exhibitor: <u>n/a</u> Display No. <u>n/a</u>
<b>D.</b>	<b>BEST ONCIDIUM ALLIANCE by a Novice Grower</b> <u>Onc. Sharry Baby</u> Exhibitor: <u>Earle Stebben</u> Display No. <u>Members Open Tables</u>
<b>E.</b>	<b>BEST CYMBIDIUM by a Novice Grower</b> <u>None entered</u> , Exhibitor: <u>n/a</u> Display No. <u>n/a</u>
<b>F.</b>	<b>BEST PLEUROTHALLID ALLIANCE by a Novice Grower</b> <u>Pleurothalis palliolata</u> , Exhibitor: <u>George McRae</u> Display No. <u>Members Open Tables</u>
<b>G.</b>	<b>BEST DENDROBIUM ALLIANCE by a Novice Grower</b> <u>Den. Lim Chong Min</u> , Exhibitor: <u>Judy Lim</u> Display No. <u>Members Open Tables</u>
<b>H.</b>	<b>BEST MISCELLANEOUS by a Novice Grower</b> <u>Aerangis luteo-alba</u> , Exhibitor: <u>George McRae</u> Display No. <u>Members Open Tables</u>

### OSC 2006 Intermediate Trophy Winners

<b>A.</b>	<b>BEST CATTLEYA ALLIANCE by an Intermediate Grower</b> <u>LC. Starting Point "Unique"</u> Exhibitor: <u>Mimi Rose</u> Display No. <u>14</u>
<b>B.</b>	<b>BEST CYPRIPEDIUM ALLIANCE by an Intermediate Grower</b> <u>Paph. Magnificum</u> Exhibitor: <u>Mary Lou Smith</u> Display No. <u>Members Open Tables</u>
<b>C.</b>	<b>BEST PHALAENOPSIS / VANDA ALLIANCE by an Intermediate Grower</b> <u>Meda. Arnold</u> Exhibitor: <u>Mark Dillard</u> Display No. <u>Members Open Tables</u>
<b>D.</b>	<b>BEST ONCIDIUM ALLIANCE by an Intermediate Grower</b> <u>Onc. Dorothy Wisnom "Golden Gate"</u> Exhibitor: <u>Paula Shiu</u> Display No. <u>13</u>
<b>E.</b>	<b>BEST CYMBIDIUM by an Intermediate Grower</b> <u>Cym (un-named seedling)</u> Exhibitor: <u>Paula Shiu</u> Display No. <u>13</u>

<b>F.</b>	<b>BEST PLEUROTHALLID ALLIANCE by an Intermediate Grower</b> No Entries Exhibitor: <u>N/A</u> Display No. <u>N/A</u>
<b>G.</b>	<b>BEST DENDROBIUM ALLIANCE by an Intermediate Grower</b> Den. Easter Bunny "Ryan" Exhibitor: <u>Noble C. Emery</u> Display No. <u>Members Open Tables</u>
<b>H.</b>	<b>BEST MISCELLANEOUS by an Intermediate Grower</b> <u>Stenoglottis longifolia</u> Exhibitor: <u>Paula Shiu</u> Display No. <u>Members Open Tables</u>

**OSC 2006 Advanced Trophy Winners**

<b>A.</b>	<b>BEST CATTLEYA ALLIANCE by an Advanced Grower</b> <u>C. Labiata "van Rubra"</u> Exhibitor: <u>Fred Shull</u> Display No. <u>Members Open Tables</u>
<b>B.</b>	<b>BEST CYPRIPEIDIUM ALLIANCE by an Advanced Grower</b> <u>Paph. Supersuk,</u> Exhibitor: <u>Walter Shinn,</u> Display No. <u>10</u>
<b>C.</b>	<b>BEST PHALAENOPSIS / VANDA ALLIANCE by an Advanced Grower</b> <u>Vanda roeblingiana,</u> Exhibitor: <u>Musia Stagg,</u> Display No. <u>Members Open Tables</u>
<b>D.</b>	<b>BEST ONCIDIUM ALLIANCE by an Advanced Grower</b> <u>Wils. Intermezzo "Passion",</u> Exhibitor: <u>Musia Stagg,</u> Display No. <u>11</u>
<b>E.</b>	<b>BEST CYMBIDIUM by an Advanced Grower</b> <u>Cym. Khairpour "Symmetry"</u> Exhibitor: <u>Musia Stagg</u> Display No. <u>11</u>
<b>F.</b>	<b>BEST PLEUROTHALLID ALLIANCE by an Advanced Grower</b> <u>Masd. Highland Monarch</u> Exhibitor: <u>Walter Shinn</u> Display No. <u>10</u>
<b>G.</b>	<b>BEST DENDROBIUM ALLIANCE by an Advanced Grower</b> <u>Den. cuthbertsonii</u> Exhibitor: <u>Steve Beckendorf</u> Display No. <u>Members Open Tables</u>
<b>H.</b>	<b>BEST MISCELLANEOUS by an Advanced Grower</b> <u>Eriopsis biloba "Peruvian Sun" AM/AOS</u> Exhibitor: <u>Walter Shinn</u> Display No. <u>10</u>

**OSC 2006 Commercial Trophy Winners**

<b>A.</b>	<b>BEST CATTLEYA ALLIANCE by a Commercial Grower</b> <u>Not indicated by Judges</u>
<b>B.</b>	<b>BEST CYPRIPEIDIUM ALLIANCE by a Commercial Grower</b> <u>Not indicated by Judges</u>
<b>C.</b>	<b>BEST PHALAENOPSIS / VANDA ALLIANCE by a Commercial Grower</b> <u>Not indicated by Judges</u>
<b>D.</b>	<b>BEST ONCIDIUM ALLIANCE by a Commercial Grower</b> <u>Not indicated by Judges</u>
<b>E.</b>	<b>BEST CYMBIDIUM by a Commercial Grower</b> <u>Not indicated by Judges</u>
<b>F.</b>	<b>BEST PLEUROTHALLID ALLIANCE by a Commercial Grower</b> <u>Not indicated by Judges</u>
<b>G.</b>	<b>BEST DENDROBIUM ALLIANCE by a Commercial Grower</b> <u>Not indicated by Judges</u>
<b>H.</b>	<b>BEST MISCELLANEOUS by a Commercial Grower</b> <u>Not indicated by Judges</u>

## COEGLOGYNES

There are over 100 species of Coelogynes; the warmer-growing ones are fussy plants and are difficult for the amateur to grow successfully.

The majority of Coelogynes are native to the Himalayas, Bhutan, China, Vietnam and the Philippines, with some reaching as far as Fiji.

At the higher elevations these plants are subject to cold winters with some overnight snow, and bright cool summers. *C. cristata*, *C. fimbriata* and *C. mooreana* are the very cool growers. They require a winter night temperature down to 45F (7C) and never above 50F (10C), with a rise of about 15F (8C) during the daytime. In winter the plants need a rest while the new growths mature and form their flower buds, so from the end of October to the end of January they should be kept just moist, but never allowed to dry out completely. What they need is just enough moisture so that the pseudobulbs remain plump. If signs of shrivelling are seen, a spray of water over the whole plant and the top of the growing medium should be given. Smaller plants need to be kept moister in winter as, having smaller reserves, they will dehydrate more readily than the larger plants.

In summer they need copious amounts of water. Indeed, *C. cristata* can be stood in a shallow saucer of water to some advantage at this time of year.. As orchids go they are also quite greedy feeders. In May to August use a high Nitrogen feed at Cymbidium strength (700 to 1000 ppm), and in September and October he changes to a high Potash feed, the same as many people feed to their tomatoes, again at Cymbidium strength. With this regime Coelogynes will flower in the late winter, from January to March or April, and are often highly scented. The flowers are long lasting too, so they will make good houseplants for a cool room provided that the required cold winter rest can be provided.

Coelogynes that need it can be repotted immediately after flowering. It is usual to repot every second year; do not be tempted to divide the plants unless absolutely necessary as they may refuse to flower the next season. Only split the plant if the centre has deteriorated and needs to be discarded, or if the plant is so big as to be unwieldy. They do best if simply dropped into a larger pot and the space around the rootball filled in with new compost. This way a magnificent specimen plant can be obtained, if one has the room. As for the medium, Peter suggests fine to medium bark with a top dressing of sphagnum moss. Shallow baskets and half pots work very well, but not bark rafts as they are too dry.

Few insect pests seem to bother these species to any great extent. **Scale** is something to watch for and eradicate if it arises. Black tips to orchid leaves are often a sign of over-feeding, but in Coelogynes it seems to be a normal habit of the foliage of a mature specimen. Black or dark brown spots and streaks, particularly on the underside of the leaves, are also very common. While they may indicate viruses, these are rare in Coelogynes.

High light levels are needed all year round although foliage will burn in summer if it is 'overcooked'. Because of this need for light they are often happy when hung near the roof of the greenhouse, as long as they are within reach of the watering can.

- *C. alata* will grow well in the plastic mesh baskets that are generally sold for aquatic plants. It has many small creamy white flowers with bright orange on the lip and will last up to three months in flower.
- *C. cristata* has glistening white twisted petals with a bright yellow centre to the lip, 7-8 flowers per bulb, 3" or more across and a scent of jasmine. To see *Coelogyne cristata*.
- *C. cristata var. lemoniana* has a pale lemon yellow centre to the lip. To see *C. cristata var. lemoniana*.
- *C. fimbriata* is a small creeping plant. The flower is pale yellowish to light brown with a brown to blackish blotch on the centre of the lip and a faint musky scent.
- *C. flaccida* has an orange lip that is darker than *C. granulosa*.
- *C. granulosa* has an orange/yellow lip.
- *C. mooreana* has up to eight glistening white flowers with orange on the lip.
- *C. ochracea* has the best scent of all but it does not do well as a houseplant. It flowers on erect stems with 7-9 blooms that are white with an orange/yellow lip.

Not many Coelogynes are hybridised today, but they will form crosses with Zygopetalums and Pleiones.

# *Announcements*

## *Pacific Orchid Expo*

February 15-18, 2007

Pacific Orchid Expo, February 15th thru 18th. In the past O.S.C. has participated by having a lovely display. We need a volunteer to chair our planning and execution. This is a great opportunity for even a new member. The theme is Orchid Fantasia, and there is great information at the San Francisco Orchid Society website. [www.Orchidsanfrancisco.org](http://www.Orchidsanfrancisco.org).

## *Moving Sale—Cattleyas Available*

November 25th & 26th, 10:00 am– 2:00pm.

Huge Moving Sale -Mostly large cattleyas priced to move at \$1, \$5 and \$10.

Cash or checks only, please bring your own boxes.

Address: 225 Dwight Road, Burlingame. Please call for directions. Fred Shull 510-316-1448 or 510-569-9940.

## *House for Sale*

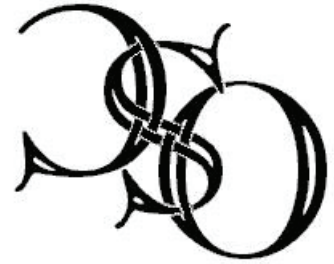
Small older home (2 bedrooms 1 bath) for sale in delightful Burlingame neighborhood.

Large (legal) greenhouse area currently being used to grow orchids.

Please call Fred Shull at 510-569-9940 for further information.

Next Meeting: Monday, November 20  
2006  
Lakeside Garden Center, Lake Merritt

The first orchid society west  
of the Mississippi, est. 1937



FIRST CLASS MAIL

Orchid Society of California  
360 Grand Avenue #129  
Oakland, CA 94610

---

In this issue:

⇒ Cynthia Hill—Coelogynes

⇒ Paph House Annual Open House & Sale

⇒ Growing Vandas

⇒ Trophy List

**[www.orchidsocietyofcalifornia.com](http://www.orchidsocietyofcalifornia.com)**

---