

# Orchid Society of California

Next Meeting: Monday, August 15, 2005  
Lakeside Garden Center, Lake Merritt  
666 Bellevue Ave. Oakland, California

## **PROGRAM TOPIC: Plant Auction** **Dennis Olivas & Dan Chiappone**

The schedule for the August meeting will be adjusted as follows to accommodate our auction and ice cream social:

At 6:30 PM, volunteers are needed to help set up the ice cream, plant donation, and display tables, as well as seating for members. We also need people to help scoop lots of frozen ice cream and sorbet and set out the toppings and dishes.

This is also when members who are donating plants should bring them to the table in the hallway where Francisco Baptista will inspect them and turn them over to the auction volunteers to log in with an auction number. Members are asked to bring in a division or plant they can spare. Please make sure there is a label. Unfortunately, plants without labels cannot be accepted.

At 7:00 PM, instead of the culture session, we will be serving ice cream with a variety of toppings and socializing with each other while reviewing the plants that will be auctioned later in the evening. Sorbet will be available as a lighter alternative to ice cream. Old issues of Orchid Digest will be available to browse and purchase for a modest price.

At 7:30 PM we will call the meeting to order for any announcements, then the auction will begin. Raffle tickets for a door prize plant will be distributed at the end of the auction. Every member in attendance will receive a ticket.

Dennis Olivas and Dan Chiappone will co-host the auction, providing entertaining plant descriptions and cultural advice for all of the auction plants. Dan has advised us that members should bring their own boxes or bags for taking home plants. There will be no plant hotel.

Non-plant items such as OSC T-shirts, orchid-related books, and other items will also be auctioned off.

August 2005

---

### Inside this issue:

**Calendar**            **2**

**August in your  
Orchid Garden**    **3**

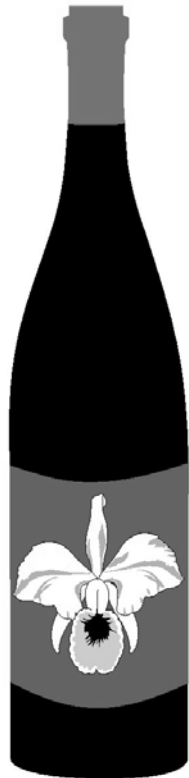
**Bay Area AOS  
Awards**            **4**

**Contact Us**        **4**

### Meeting Details

- Set up ice cream, plant donations, display tables, seating at 6:30 PM
  - Ice Cream Social at 7:00 PM
  - Meeting starts at 7:30 PM
  - Auction starts after announcements
  - Door prizes drawn after auction
-

# Orchids In The Wine Country



## SONOMA COUNTY ORCHID SOCIETY AOS MEMBERS MEETING & SHOW

October 12-16, 2005

Orchid Show and Sale

Friday, October 14 - Sunday, October 16

10 a.m. - 5 p.m.

Admission: \$7

Doubletree Hotel Sonoma Wine Country  
Rohnert Park, California

[www.sonomaorchids.com](http://www.sonomaorchids.com)

On behalf of the Sonoma County Orchid Society, it is my pleasure to invite you to Orchids in The Wine Country, the American Orchid Society Members Meeting/ Sonoma County Orchid Society Show and Sale. This will take place at the Doubletree Hotel Sonoma Wine Country in Rohnert Park, California. Preview Night will be on Thursday evening, October 13. The Show will run Friday, Saturday and Sunday, 10am to 5pm. There will be 18 vendors – local, national and international. Friday will have an exciting schedule of lectures running from 9am to 6pm. Friday evening the Pleurothallid Alliance will present two lectures along with their auction. Saturday morning will have the AOS General Meeting followed by the Slipper Orchid Alliance lecture. The afternoon will have two lectures presented by the International Phalaenopsis Alliance. Saturday evening festivities start with the AOS Auction followed by the Banquet. You are invited to participate in any or all of these events. The scheduled speakers and vendors are listed on the Sonoma County Orchid Society web site: [www.sonomaorchids.com](http://www.sonomaorchids.com). Registration forms are also available there.

Full registration at \$80 covers Preview Night, full access to all lectures and the show for Friday, Saturday and Sunday. Note that the full registration fee increases to \$100 on September 1. Preview Night at \$30 requires prior registration so reservations for the dessert buffet can be made. One day registration is available for either Friday or Saturday at \$30. This allows admission to the lectures and the Show. Show only admission is \$7 each day. Information, registration forms and directions to the hotel are on our web site. If you have questions or need further information, please contact me at [rathbun@sonic.net](mailto:rathbun@sonic.net) or 707-528-1671. We hope you will join us for this exciting event.

## Calendar

### August 13-14

D & D Flowers is having a huge inventory reduction sale. Hours are 9:00 a.m. to 4:00 p.m. in Half Moon Bay. Great prices on original divisions of Cattleyas, Oncidiums, Cymbidiums, Paphiopedilums, Phragmipediums and many more genera. See ad page 3 or call Dennis Olivas at 925-969-1246

### September 29–October 2

Hilo Orchid Society 53rd Annual Orchid Show & Sale, Edith Kanakaole Tennis Stadium, 699 Piilani St., Hilo, HI. Contact: Carol A. Siebenrock, PO Box 990, Kurtistown, HI 96760; (808) 968-8196.

### October 12–16

Sonoma County Orchid Society Show and AOS Members Meeting, Doubletree Hotel, One Doubletree Dr., Rohnert Park, CA. Contact: Dr. Earl Rathbun, 1920 Grace Dr., Santa Rosa, CA 95404; (707) 528-1671

### November 11-13

Orchid Society of California Show, Lakeside Garden Center, 666 Bellevue, Oakland, CA. Contact: Francisco Baptista, 375 Warwick Ave., San Leandro, CA 94577

(510) 635-2845 [chicosorchids@yahoo.com](mailto:chicosorchids@yahoo.com)

Need more? See the AOS Calendar online at: <http://orchidweb.org/aos/events/shows.aspx>

## August in Your Orchid Garden

This month we will review re-potting our plants, starting with choosing a pot. Pots for growing orchids come in two basic materials: plastic and clay. Choosing which is suitable for a particular orchid depends on its grower.

Plastic pots have distinct advantages for professional growers. First, they are inexpensive, costing only a fraction of what terra cotta pots sell for. They are also light and easy to handle as well as being much less fragile than clay. Plastic pots are therefore the overwhelming favorite of most professional growers and amateurs will find the majority of the orchids they purchase in the mass market potted in plastic

The most important reason for commercial growers to use plastic rather than clay is cultural. Plastic retains water, keeping the growing media wet much longer. Such water retention is a very desirable characteristic in commercial greenhouses which are covered with plastic or glass and with a professional irrigation schedule. The reduced frequency of watering minimizes the length of time that the plant's foliage needs to be wetted and thus reduces the incidence of fungal problems.

Unfortunately, these advantages to the professional grower may not continue through to the orchid hobbyist in the Bay Area. With the exception of Phalaenopsis, Paphiopedilums, terrestrial genera and a few moisture loving epiphytes, plastic pots may be a poor choice for hobbyists growing orchids here. This is because the water retaining qualities of plastic pots so beneficial to commercial growers under controlled circumstances are exceedingly detrimental to orchids grown outside in the Bay Area during the rainy season, or during the cool, grey periods of weather. During exceptionally hard and prolonged rainfall that inevitably occurs in our rainy

season, plastic pots exacerbate the problem of plants staying too wet, too long. Even under the best of conditions of bright light and brisk air movement, during our rainiest days the result is fungal problems or worse.

Clay pots, in exact contrast to plastic, transpire water from the growing media allowing the orchid's roots to dry more quickly and be better aerated. The wicking away of water from the center of the pot and its subsequent transpiration at the surfaces creates evaporative cooling that can be of great benefit when temperatures are high. The rate at which this evaporation takes place will vary with the density of the clay and the degree to which it has been fired. Glazed pots should be avoided. Glazing renders the outer surface of the pot impervious to water; in effect plasticizing it. If the beauty of a glazed pot is irresistible, place the terra cotta pot holding the orchid plant inside it.

Clay pots yield other advantages for orchid hobbyists. They are much heavier than plastic pots, which gives them the ability to serve as ballast for the tall or heavy orchids grown in them. Without the anchor of a weighty clay pot many orchid plants are likely to tip over and break themselves. This unfortunate event is most likely to occur when the plant is bearing flowers and/or is being placed on display.

Another misfortune that can befall orchids that have tipped over is that they can easily dislodge themselves. An orchid loose in its container is always in deep trouble. Both clay's weight and adhesive nature provide the grower some insurance against these life threatening accidents. Keeping orchids firmly lodged in place is an irrevocable law of good orchid culture.

More on repotting next month!

# AOS Awards

## Pacific Central Supplemental Center San Francisco, July 5, 2005

*Disa uniflora* 'Hyuk Soon'  
Exhibited by Anna S. Chai  
AM 82 and CCM 89

*Epidendrum probiflorum* 'Marion'  
Exhibited by Gerardus Staal  
CBR (prov)

## August 2, 2005

*Disa uniflora* 'Red Glory'  
Exhibited by Golden Gate Orchids  
HCC 79

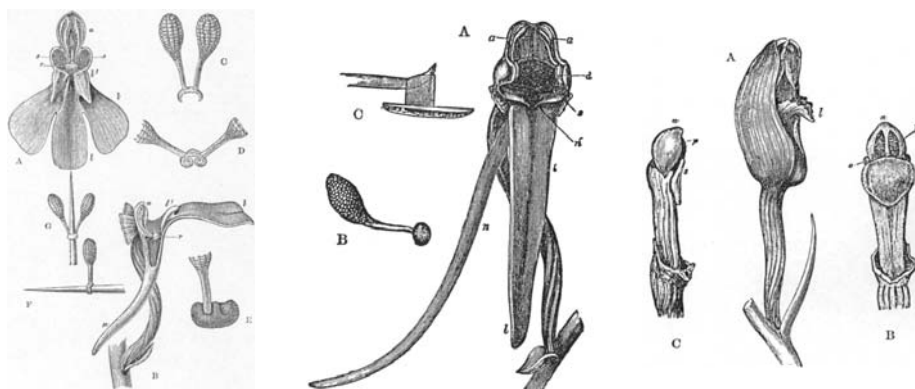
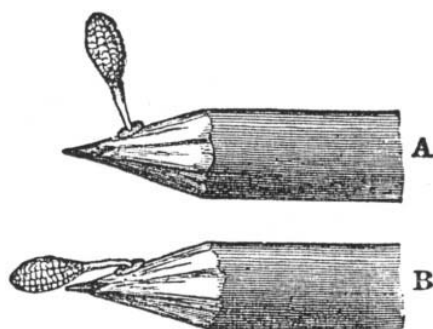
## Pacific Central Judging Center, Oakland, July 18, 2005

*Cynorkis purpurascens* 'Saint Germain's Blessing'  
Exhibited by Walter M. Shinn  
HCC 76 (Prov)

Vanda Pat Delight 'Mega'  
(Vanda Kasem's Delight x Vanda Fuchs Delight)  
Exhibited by James F. Hile  
AM 80

For more information and pictures please  
visit the Pacific Judging web site:

<http://www.aospacificcentral.org>



## Contact Us

### Officers

Carol Klonowski *President* 510-538-3092  
cklonowski@aol.com

Walter Shinn *Vice President*  
walter.shinn@sri.com

Lois Miller *Secretary* 510-793-4243  
slippergal@msn.com

Dan Chiappone *Treasurer* 925-943-2022  
Dchiapej@aol.com

### Directors

Earle Stebben 510-582-3404  
estebben@yahoo.com

DeAnn Mosbey 510-521-7825  
dmosbey@aol.com

### Volunteers

Sharalyn Stebben *Advertising* 510-582-3404

Lois Miller *Membership Chair* 510-793-4243 slippergal@msn.com

OPEN *Publicity Chair* 510-\_\_\_\_-\_\_\_\_@\_\_\_\_.com

Heather Drobus *Hospitality* 510-531-1210

Dawn Muller *Refreshments* 510-893-7244

Gerardus Staal *Special Projects* 650-328-2404

Ray Vickers-Traft *Special Projects* 510-839-9647

Mike Anderson *Newsletter Editor* 510-651-1781  
vailanderson@comcast.net

Agnes Raddell *Plant Sales* 925-829-0485

Jane Tsushima *Plant Sales* 510-635-5129

Mary Lou Smith *Raffle Sales* 510-538-9977 mlrls@aol.com

Carol Klonowski *Website Goddess* 510-538-3092  
cklonowski@aol.com

Mary Lou Smith *A.O.S. Representative* 510-538-9977 mlrls@aol.com

Mimi Rose *Greenhouse Tours* 510-569-8683  
rose4mimi@Yahoo.com.com

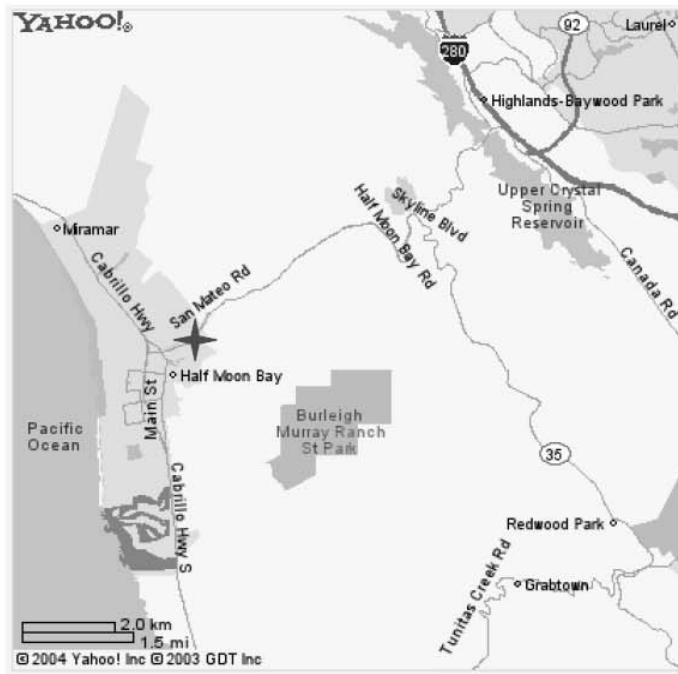
Chris Martin *Librarian* lagomorph@alamedanet.net

# D & D Flowers Big Weekend Sale

**Inventory Reduction – Plants Priced to Sell!**

**August 13 & 14, from 9 am to 4 pm in Half Moon Bay**

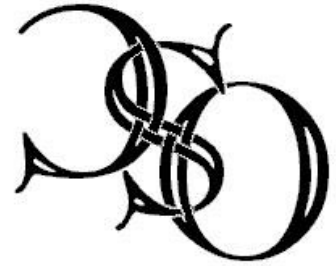
**Plants, People, Food, Music, and Fun**



The greenhouse is located on Hwy 92, 1/3 mile east of Main Street in Half Moon Bay. As you drive on Hwy 92, look for Spanishtown and the dinosaurs on the south side (on your left if you're driving down the hill toward Half Moon Bay). *Before* Spanishtown is a house and wood pile & yard. **Turn onto the driveway between the house and the wood pile** and go over the bridge. D & D Flowers is the first greenhouse on the right. Park anywhere you can. If you have questions, call Dennis Olivas at 925-969-1246.-- P.S. You cannot see the greenhouses from Hwy 92.

Next Meeting: Monday, August 15, 2005  
Lakeside Garden Center, Lake Merritt  
666 Bellevue Ave. Oakland, California

The first orchid society west  
of the Mississippi! est. 1937



Orchid Society of California  
360 Grand Avenue #129  
Oakland, CA 94610

---

**In this issue:**

⇒ **Ice Cream Social**

⇒ **Auction**

[www.orchidsocietyofcalifornia.com](http://www.orchidsocietyofcalifornia.com)

---